

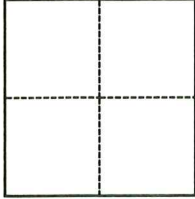
CORNER RECORD

Agency Index CR-24-200
Document Number _____

City of Lathrop County of San Joaquin, California
Brief Legal Description Street monuments in Sadler Oak Drive from Tract No. 3438 (41 MP 20)

CORNER TYPE

COORDINATES (Optional)



- Government Corner
- Meander
- Rancho
- Control
- Property
- Other

N. _____ E. _____
 Elevation _____
 Units Metric U.S. Survey Foot
 Horizontal Datum _____
 Zone _____ Epoch Date _____
 Vertical Datum _____
 Complies with Public Resources Code §§8801-8819
 Complies with Public Resources Code §§8890-8902

Date of Survey March 1, 2024

PLS Act Ref.: 8765(d) 8771 8773 Other:
 Corner/Monument: Left as found Established Rebuilt Pre-Construction
 Found and tagged Reestablished Referenced Post-Construction

Narrative of corner identified and monument as found, set, reset, replaced, or removed:

See sheet #2 for description(s):

Two monuments in Sadler Oak Drive, at each end of the monument line shown as "N88°16'44"E 324.37' M-M" on sheet 4 of 4 of Tract Map No. 3438, filed for record in Book 41 of Maps and Plats, at Page 20. Said monuments are both in danger of being disturbed by construction and are described as follows: 2.5" brass disk monuments inside monument wells, with punch, and stamped "LS 6186"

SURVEYOR'S STATEMENT

This Corner Record was prepared by me or under my direction in conformance with

the Professional Land Surveyors' Act on March 15, 2024

Signed [Signature] P.L.S. or R.C.E. No. 8654



COUNTY SURVEYOR'S STATEMENT

This Corner Record was received May 1, 2024

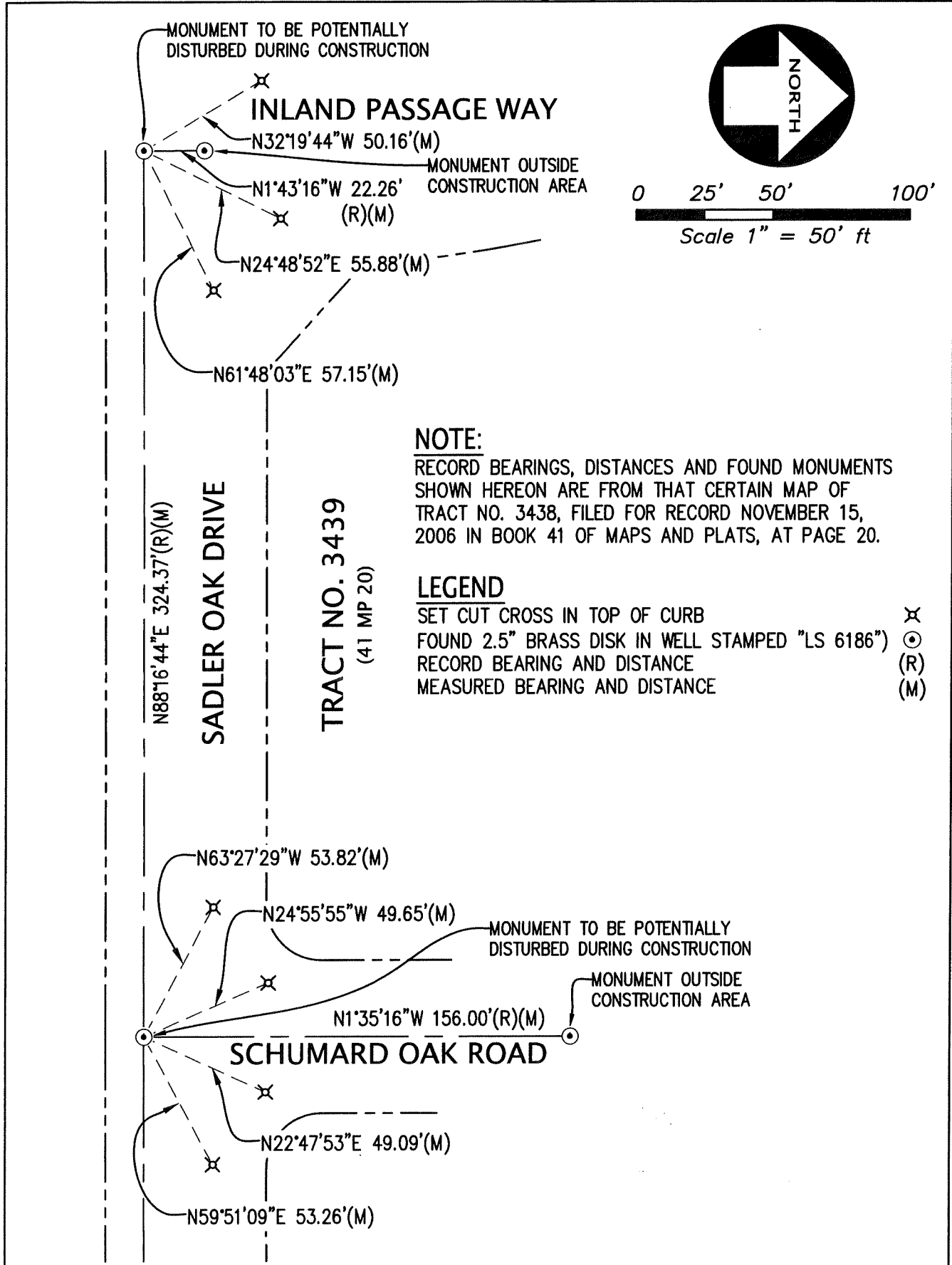
and examined and filed May 10, 2024

Signed James E. Hart P.L.S. or R.C.E. No. 8657

Title County Surveyor

County Surveyor's Comment





NOTE:

RECORD BEARINGS, DISTANCES AND FOUND MONUMENTS SHOWN HEREON ARE FROM THAT CERTAIN MAP OF TRACT NO. 3438, FILED FOR RECORD NOVEMBER 15, 2006 IN BOOK 41 OF MAPS AND PLATS, AT PAGE 20.

LEGEND

- SET CUT CROSS IN TOP OF CURB X
- FOUND 2.5" BRASS DISK IN WELL STAMPED "LS 6186" ⊙
- RECORD BEARING AND DISTANCE (R)
- MEASURED BEARING AND DISTANCE (M)