

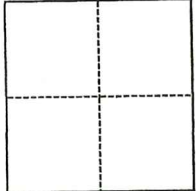
CORNER RECORD

Agency Index CR-24-198
Document Number _____

City of STOCKTON County of SAN JOAQUIN, California
Brief Legal Description LOTS 2 & 3 M.&P. 32-61, S.J.C.R.

CORNER TYPE

COORDINATES (Optional)



- Government Corner
- Meander
- Rancho
- Control
- Property
- Other

Date of Survey April 12, 2024

N. _____ E. _____
 Elevation _____
 Units Metric U.S. Survey Foot
 Horizontal Datum _____
 Zone _____ Epoch Date _____
 Vertical Datum _____
 Complies with Public Resources Code §§8801-8819
 Complies with Public Resources Code §§8890-8902

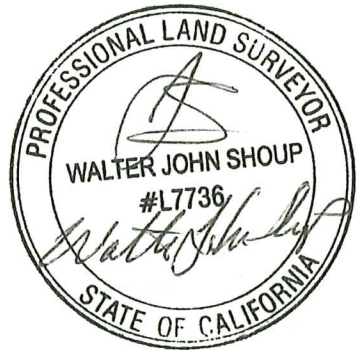
- PLS Act Ref.: 8765(d) 8771 8773 Other:
 Corner/Monument: Left as found Established Rebuilt Pre-Construction
 Found and tagged Reestablished Referenced Post-Construction

Narrative of corner identified and monument as found, set, reset, replaced, or removed:
 See sheet #2 for description(s):

SEE PAGE 2 OF 2 FOR EXHIBIT MAP SHOWING MONUMENTS FOUND AND SET.

SURVEYOR'S STATEMENT

This Corner Record was prepared by me or under my direction in conformance with
 the Professional Land Surveyors' Act on 04/15/2024
 Signed Walter John Shoup P.L.S. or R.C.E. No. L-7736

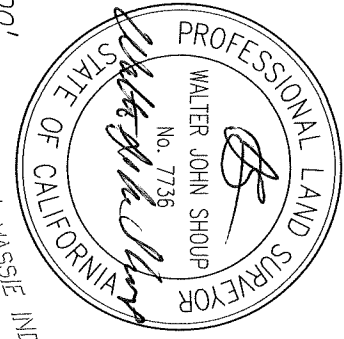
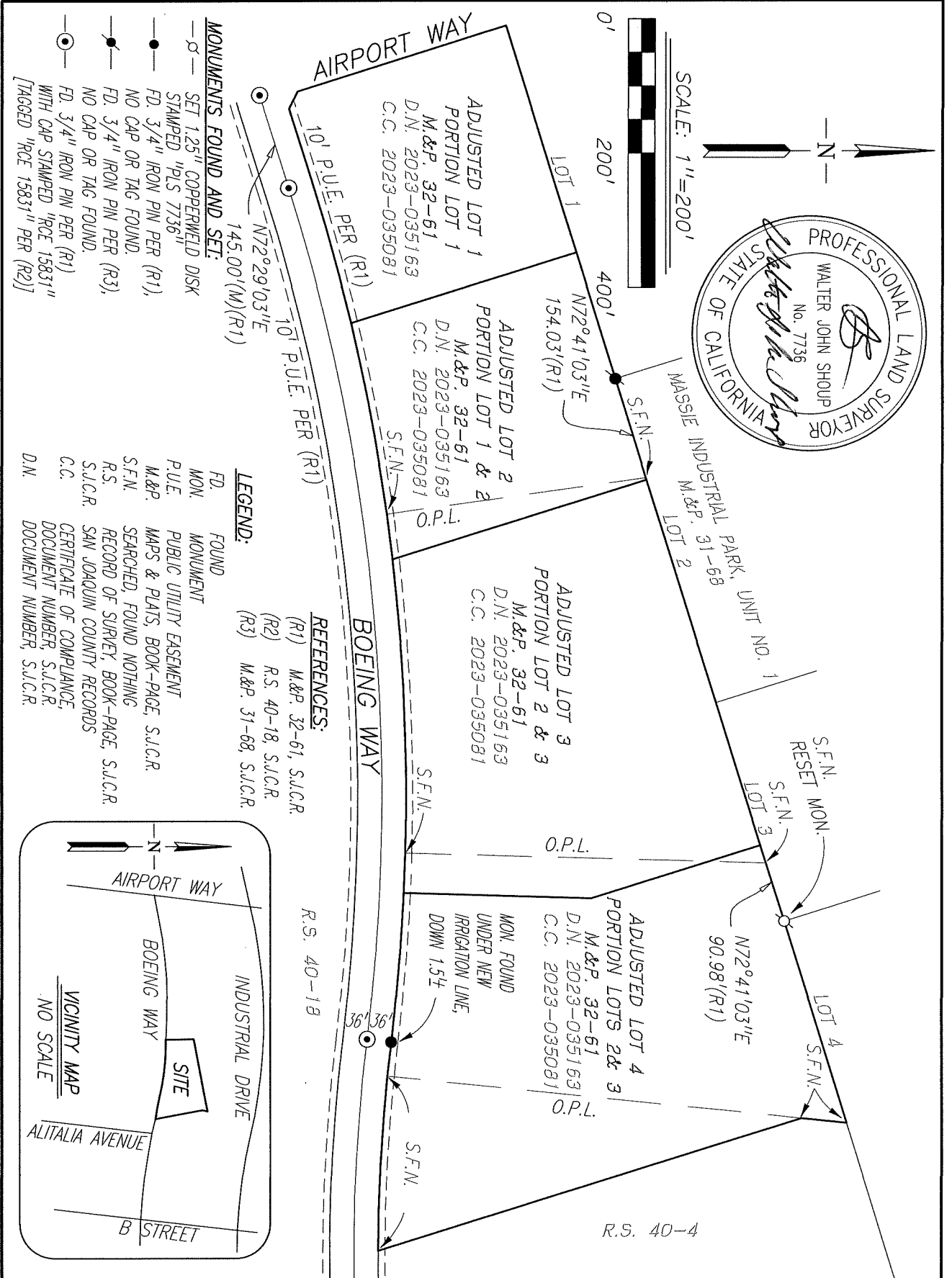


COUNTY SURVEYOR'S STATEMENT

This Corner Record was received April 15, 2024
 and examined and filed May 6, 2024
 Signed James E. Hart P.L.S. or R.C.E. No. 8657
 Title County Surveyor



County Surveyor's Comment



Scale: 1"=200'	CORNER RECORD EXHIBIT MAP	Date: 04/15/2024
Job No.: 23-062		DWG: 23062CR-POST.DWG