

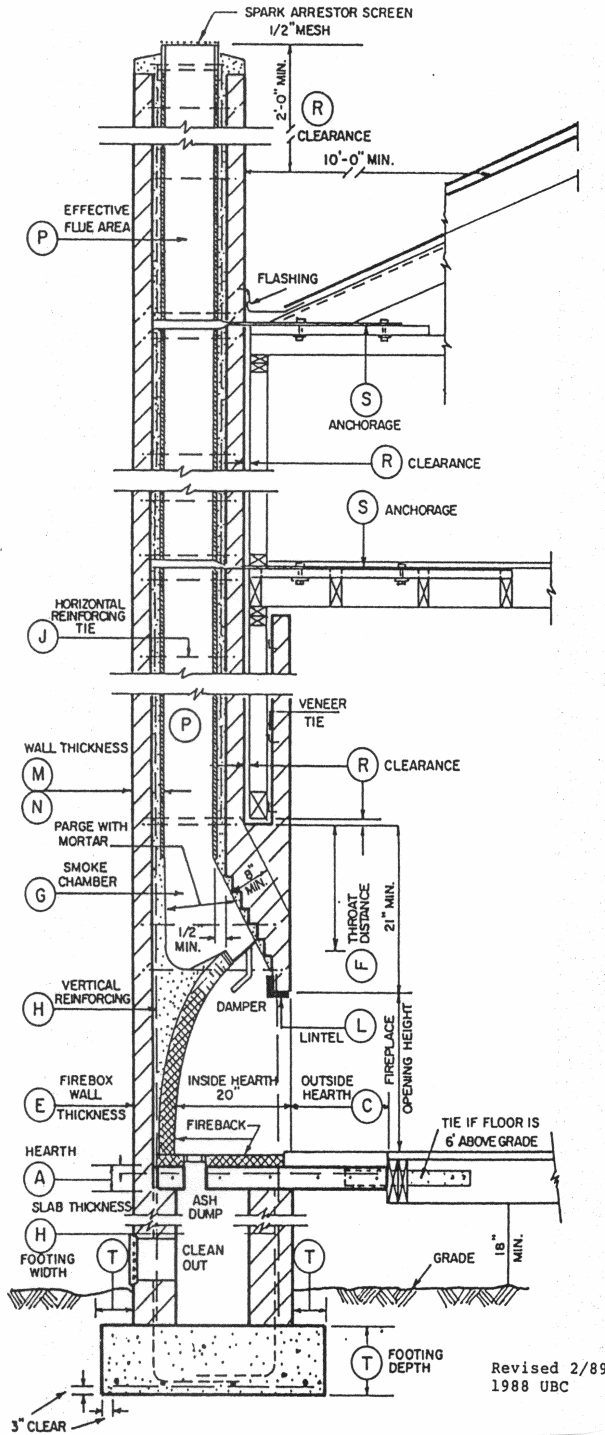


**SAN JOAQUIN COUNTY
COMMUNITY DEVELOPMENT DEPARTMENT**

1810 E. HAZELTON AVE., STOCKTON, CA 95205-6232
PHONE: 209/468-3121 FAX: 209/468-3163

MASONRY FIREPLACE & CHIMNEY DETAILS

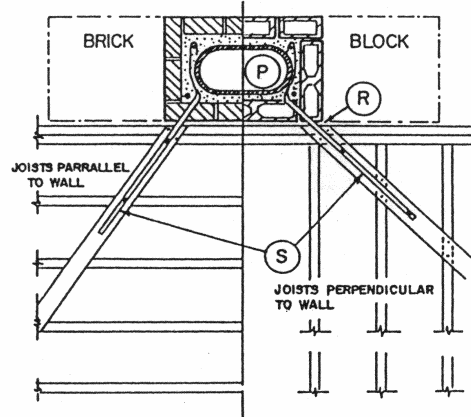
BRICK FIREBOX & CHIMNEY



- HEARTH A - 4" thick
- SLAB B - 8" width each side, for opening less than 6 sq. ft.
12" width each side, for opening 6 sq. ft. or more
- C - 16" length front of opening less than 6 sq. ft.
20" length front of opening, 6 sq. ft. or more
- FIREBOX WALL E - 10" thick, common brick, or 8" where a fireback lining is used. Jts. In fireback 1/4" maximum.
- OPENING F - 6" from top of opening to throat
- SMOKE CHAMBER G - Rear wall 6" thick
Front and side walls 8" thick.
- CHIMNEY REINFORCING H - Vertical: 4 #4 bars for chimney up to 40" wide. Add 2 #4 bars for each additional 40" or fraction of width, or for each additional flue. Maximum slope of vertical steel should be 6" horizontal to 12" vertical.
J - Horizontal: 1/4" ties at 18" and 2 ties each bend in vertical steel.
- LINTEL L - Incombustible material
- WALLS M - With flue lining: brick with grout around lining 4" minimum from flue lining to outside face of chimney.
N - Unlined flue: 8" solid masonry.
- EFFECTIVE FLUE AREA P - Based on area of fireplace opening.
Round lining: 1/12 or 50 sq. inch minimum.
Rectangular lining: 1/10 or 64 sq. inch minimum.
Unlined or lined with firebrick: 1/8 or 100 sq. inch minimum.
- CLEARANCES R - Wood frame: 1" clearance or 1/2" gypsum board for chimneys only which are entirely outside of the structure. 2" at all other locations.
Combustible material: 6" minimum to fireplace opening. 12" from opening when material projecting more than 1/8" for each 1"
Above roof: 2' at 10'
- ANCHORAGE S - Strap: 3/16" x 1"
Number: 2
Embedment into chimney: 12" hooked around outer bar with 6" ext.
Fasten to: 4 joists
Bolts: 2 Size: 1/2" diameter
- FOOTING T - Thickness: 12" minimum
Width: 6" each side of fireplace wall.
Reinforcing: #4 bars 12" on center each way.

Revised 2/89
1988 UBC

ANCHORAGE



EFFECTIVE FLUE AREA

Nominal Dimension of Flue Lining	Actual Outside Dimensions of Flue Lining	Effective Flue Area	Max. Area of Fireplace Opening	Minimum Outside Dimension of Chimney
8½" Round	8½" Round	39 sq. in.	390 sq. in.	17" x 17"
8½" x 13" oval	8½" x 12½"	69 sq. in.	690 sq. in.	17" x 21"
8½" x 17" oval	8½" x 16½"	87 sq. in.	870 sq. in.	17" x 25"
13" Round	12½" Round	91 sq. in.	1092 sq. in.	21" x 21"
10" x 18" oval	10" x 17½"	112 sq. in.	1120 sq. in.	19" x 26"
10" x 21" oval	10" x 21"	138 sq. in.	1380 sq. in.	19" x 30"
13" x 17" oval	12½" x 16½"	134 sq. in.	1340 sq. in.	21" x 25"
13" x 21" oval	12½" x 21"	173 sq. in.	1730 sq. in.	21" x 30"
17" x 17" oval	16½" x 16½"	171 sq. in.	1710 sq. in.	25" x 25"
17" x 21" oval	16½" x 21"	223 sq. in.	2230 sq. in.	25" x 30"
21" x 21" oval	21" x 21"	269 sq. in.	2690 sq. in.	30" x 30"

GAS LOG LIGHTER

The gas shut-off valve shall be of an approved type located in the same room and outside the hearth, but not more than four (4) feet from the outlet. A swing joint consisting of at least three elbows shall be installed between the gas shut-off valve and the log lighter pipe. This is to prevent breaks in the joints in the event of movement or settlement of the fireplace.

PLAN AT TOP OF HEARTH

